



**ROTHMAN**  
ORTHOPAEDIC INSTITUTE



**Sidney Kimmel  
Medical College**  
at Thomas Jefferson University

**Case: Instability – soft tissue  
considerations that might  
impact your decisions...**

Surena Namdari MD, MSc

Associate Professor of Orthopaedic Surgery

Co-Director of Shoulder & Elbow Research

Philadelphia, PA

# Disclosures

- Research Support

- **3M**
- **Aesculap**
- **AO Spine**
- **Biomet**
- **Cempra**
- **CeramTec**
- **DePuy**
- **Integra**
- **Myoscience**
- **NDRI**
- **NIH**
- **Novartis**

- **OREF**
- **Pfizer**
- **Rotation Medical**
- **Simplify Medical**
- **Smith and Nephew**
- **Stelkast**
- **Stryker Orthopedics**
- **Synthes**
- **TissueGene**
- **Tornier**
- **Orthospace**
- **Zimmer Biomet**



**ROTHMAN**  
ORTHOPAEDIC INSTITUTE



**Sidney Kimmel  
Medical College**  
at Thomas Jefferson University

# Disclosures

- **Consultant**

- DJO Surgical
- Miami Device Solutions
- Depuy Synthes
- Flexion Therapeutics
- InGeneron
- Vivo Capital

- **Royalties**

- DJO Surgical
- Miami Device Solutions
- Aevumed
- Elsevier
- SLACK
- Wolters Kluwer

- **Intellectual Properties**

- Miami Device Solutions
- DJO Surgical
- Aevumed

- **Ownership/Stock**

- Parvizi Surgical Innovations
- MD Live
- MD Valuate
- Force Therapeutics
- Aevumed
- Tangen
- Orthophor
- RubiconMD
- Rothman Orthopaedic Institute

- **Board Member/Adviser**

- Biedermann Lab for Orthopaedic Research
- Aevumed



**ROTHMAN**  
ORTHOPAEDIC INSTITUTE



**Sidney Kimmel  
Medical College**  
at Thomas Jefferson University

# Post-Capsulorrhaphy Arthropathy



**Shoulder arthroplasty for advanced glenohumeral arthritis after anterior instability repair**

JSES 2001

Andrew Green, MD,<sup>a</sup> and Tom R. Norris, MD,<sup>b</sup> Providence, RI, and San Francisco, Calif

**SHOULDER ARTHROPLASTY IN PATIENTS WITH A PRIOR ANTERIOR SHOULDER DISLOCATION**

JBJS 2003

RESULTS OF A MULTICENTER STUDY

BY J. MATSOUKIS, MD, W. TABIB, MD, P. GUIFFAULT, MD, A. MANDELBAUM, MD, GILLES WALCH, MD, CHANTAL NÉMOZ, PHD, AND T. BRADLEY EDWARDS, MD

**Intermediate and long-term follow-up of total shoulder arthroplasty for the management of postcapsulorrhaphy arthropathy**



JSES 2014

Edwin R. Cadet, MD<sup>a,\*</sup>, Peter Kok, MD<sup>b</sup>, Raymond M. Greiwe, MD<sup>c</sup>, Andrew Chan, BS<sup>d</sup>, Christopher S. Ahmad, MD<sup>d</sup>, William N. Levine, MD<sup>d</sup>, Louis U. Bigliani, MD<sup>d</sup>

**ey Kimmel  
ical College**  
at Thomas Jefferson University



FEATURE ARTICLE



## Anatomic Total Shoulder Arthroplasty Versus Reverse Total Shoulder Arthroplasty for Post-Capsulorrhaphy Arthropathy

Derek J. Cuff, MD; Brandon G. Santoni, PhD

Orthopedics. 2018;41(5):275-280 <https://doi-org.proxy1.lib.tju.edu/10.3928/01477447-20180724-05>

### Arthroplasty for glenohumeral arthritis in shoulders with a previous Bristow or Latarjet procedure



CrossMark

JSES 2018

Laurent B. Willemot, MD, Bassem T. Elhassan, MD, John W. Sperling, MD, MBA, Robert H. Cofield, MD, Joaquín Sánchez-Sotelo, MD, PhD\*

### Shoulder arthroplasty after prior anterior stabilization procedures: do reverses have better outcomes?



CrossMark

JSES 2019

Maharsh K. Patel, MD, William Z. Stone, MD, Aimee M. Struk, MBA, Kevin W. Farmer, MD, Thomas W. Wright, MD, Joseph J. King, MD\*



RO  
ORT

ney Kimmel  
dical College  
omas Jefferson University

## Discussion Points:

- Is there still a role for aTSA after prior instability surgery?
- Are there preoperative factors that alter decision making?
- Are there technical pearls to optimizing outcomes of aTSA in this setting?
- Are there intraoperative factors that make you bail to rTSA
- Are there necessary modifications to the rehab?



**ROTHMAN**  
ORTHOPAEDIC INSTITUTE



**Sidney Kimmel  
Medical College**  
at Thomas Jefferson University

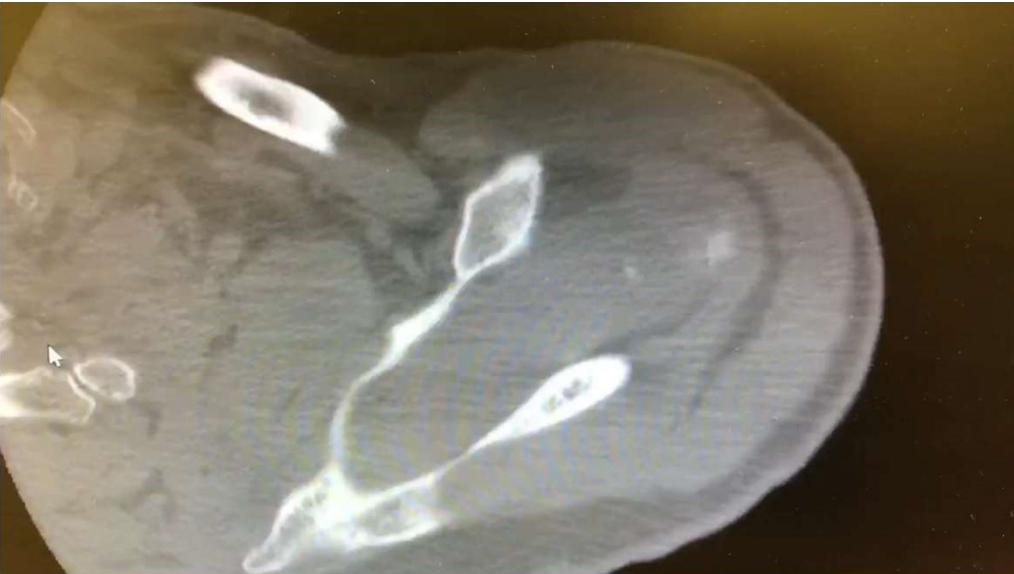
- 65-year-old RHD male with left shoulder pain for many years. History of a Bristow procedure done 30 years ago for instability (no recurrent instability). Failed injections.
- Social: shoots a bow, working out
  
- AFE 130, Abd 100, AER 5
- PFE 130, PER 5, IR S1
- Strength 5/5
- Belly press: equivocal



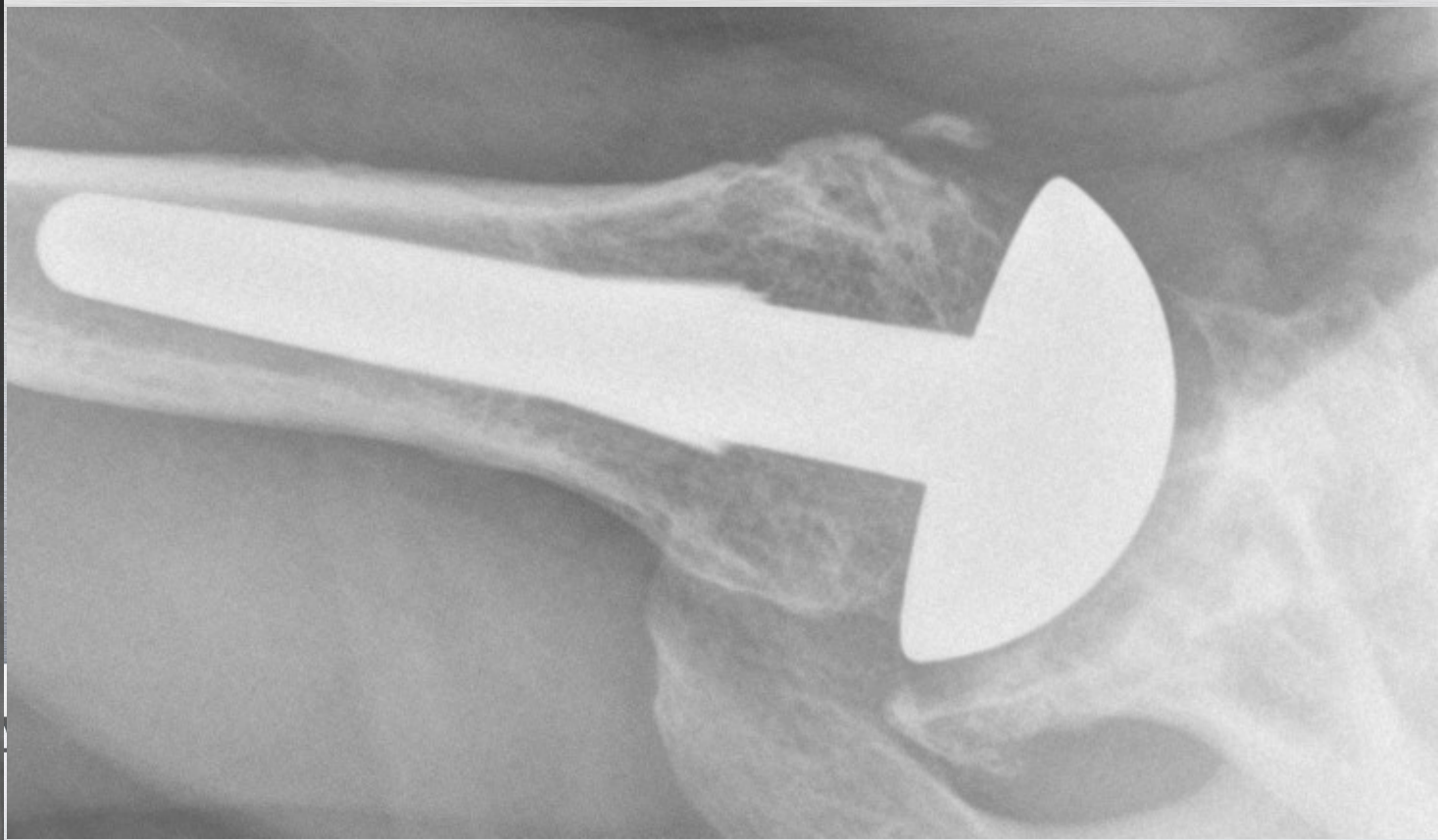
65y/o male  
AFE 110, Abd 80, AER 5  
PFE 110, PER 5, IR S1  
Strength 5/5  
Belly press: equivocal

N  
T E

F



1 year



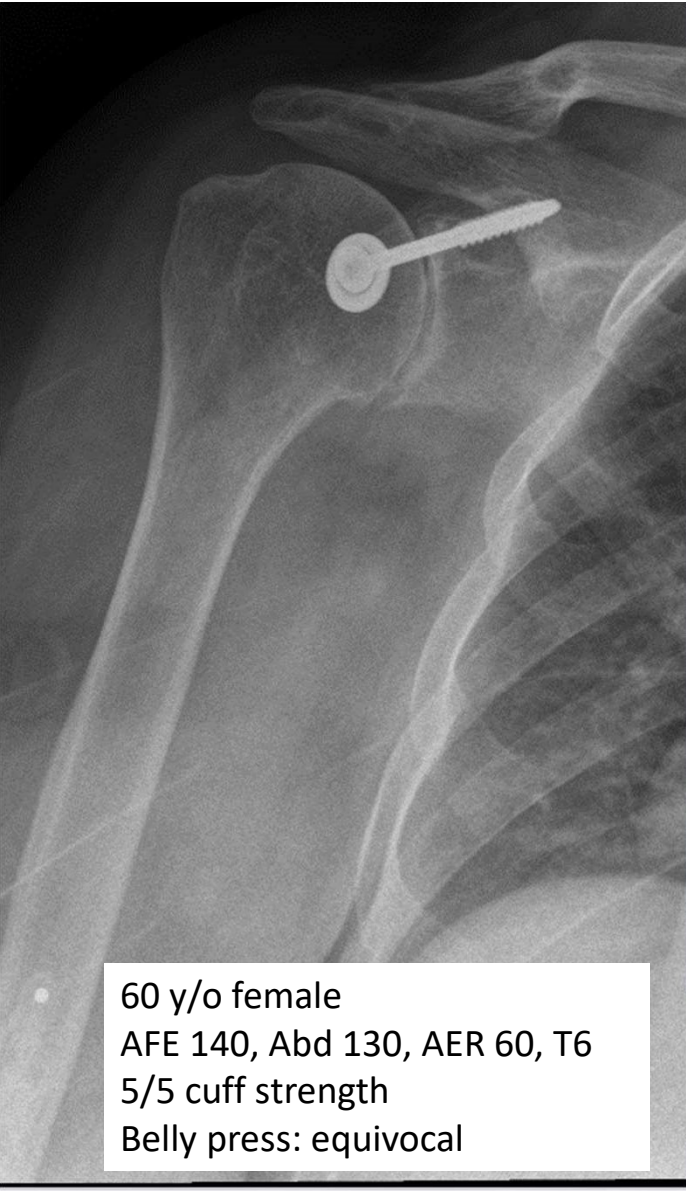
5 years



Patient provided consent

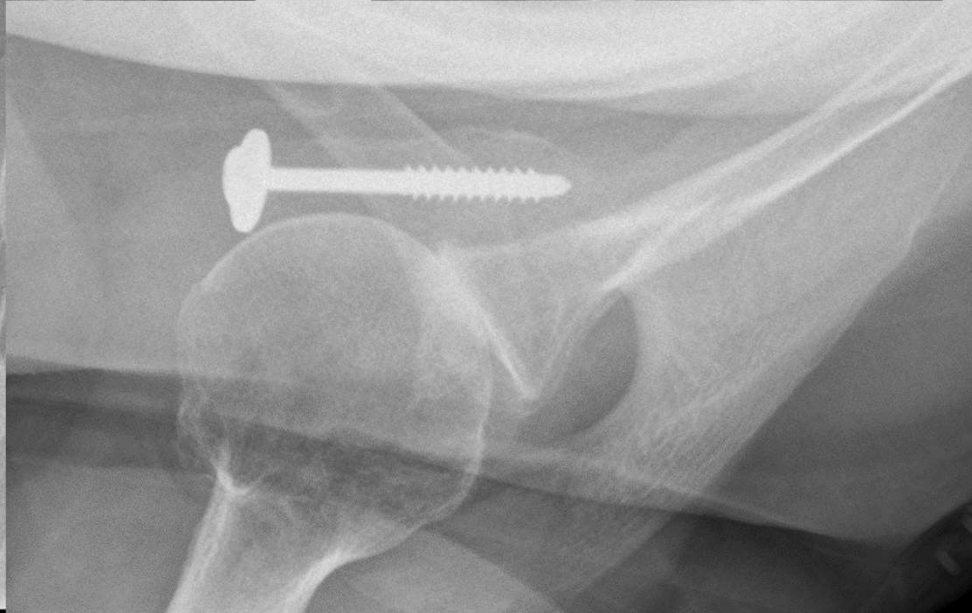
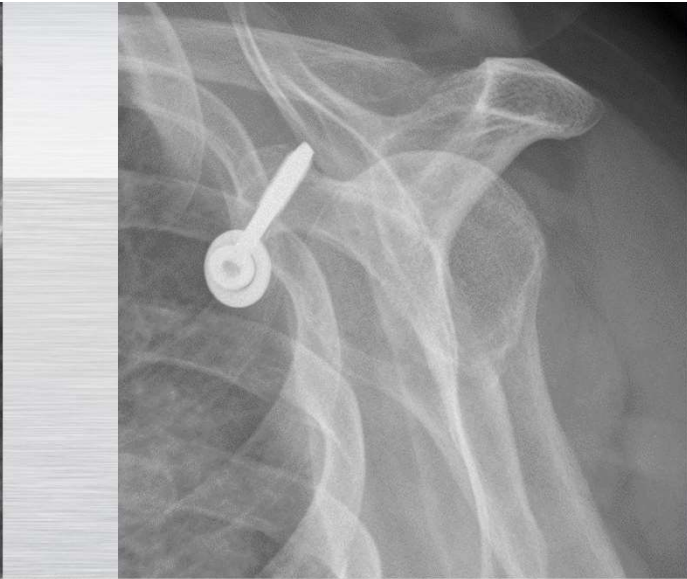
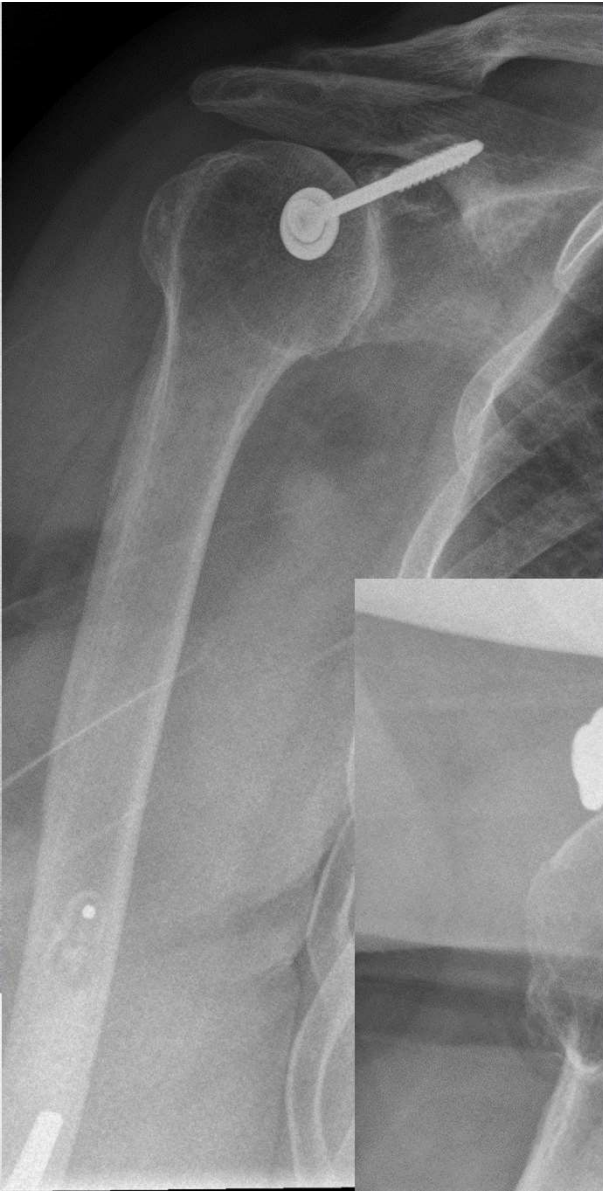
## Case 2

- 60 yo RHD female with Right shoulder pain for 5 years. Hx of instability surgery 40 years ago with no recurrent dislocation events. Injections x4.
- PMH: Asthma, Rheumatoid Arthritis (Methotrexate/Prednisone)
- Social: nonsmoker, homemaker
- PE: AFE 130, Abd 110, AER 60, T6  
5/5 cuff strength  
Belly press: equivocal

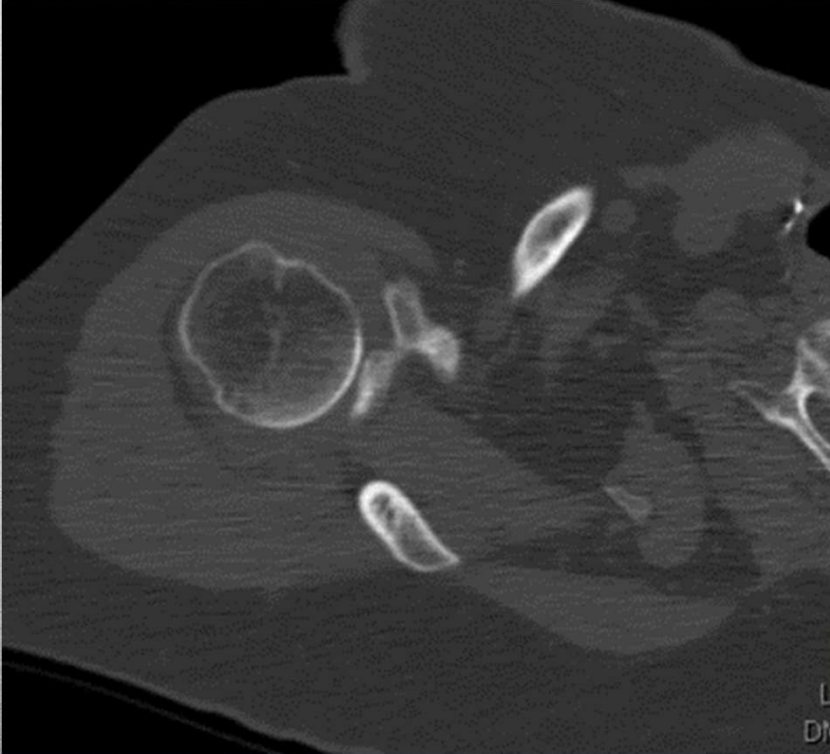


60 y/o female  
AFE 140, Abd 130, AER 60, T6  
5/5 cuff strength  
Belly press: equivocal

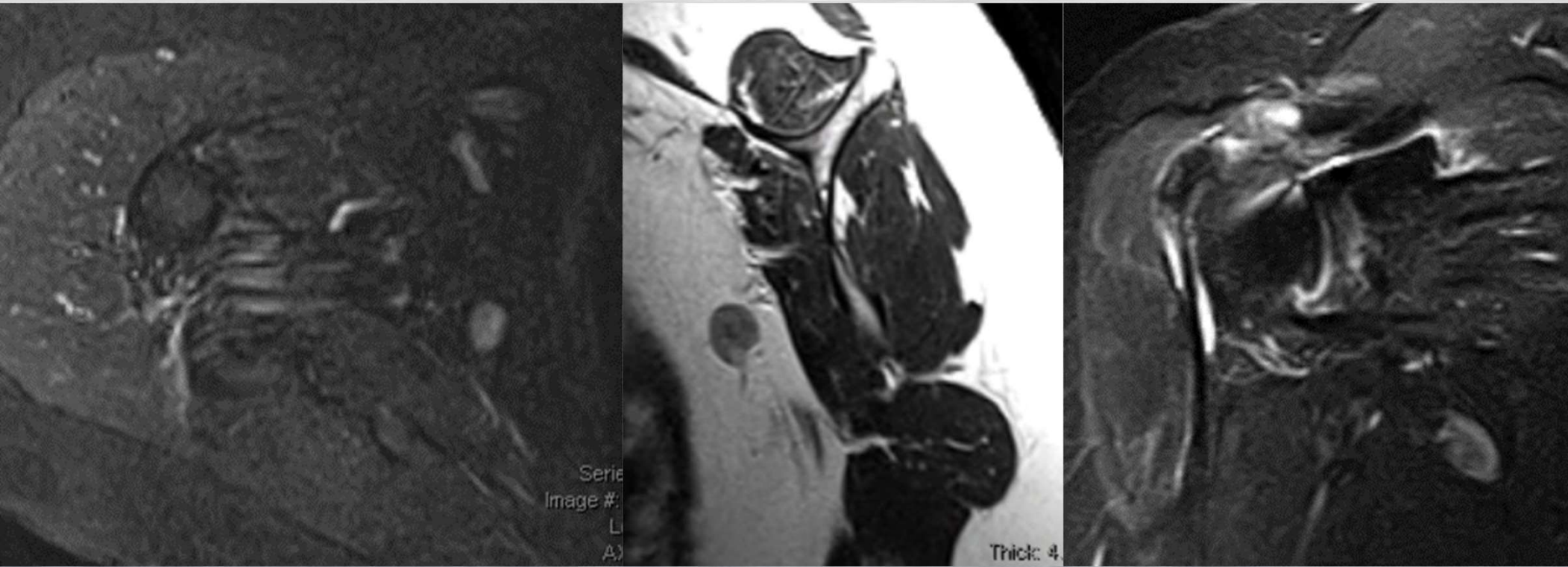
N  
I T E



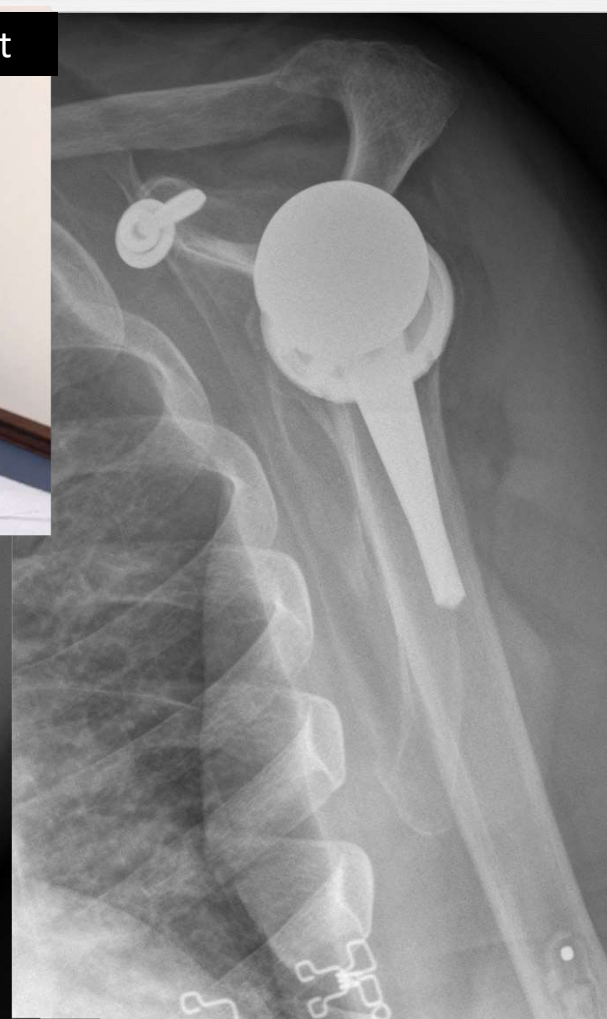
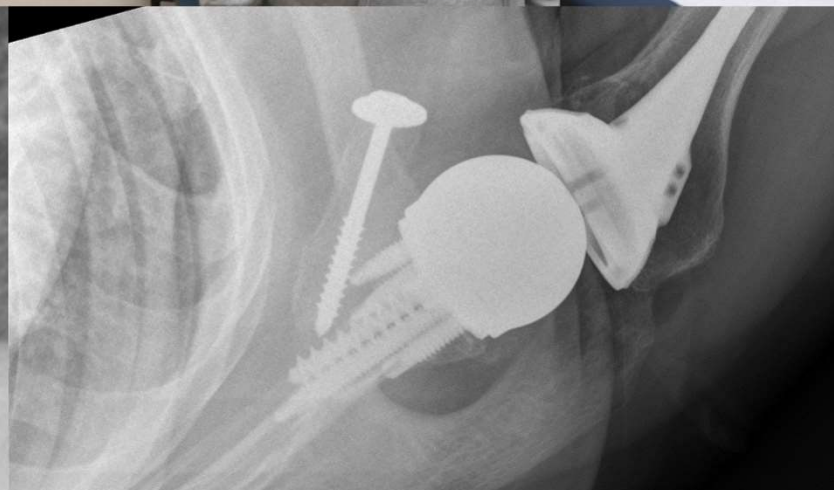
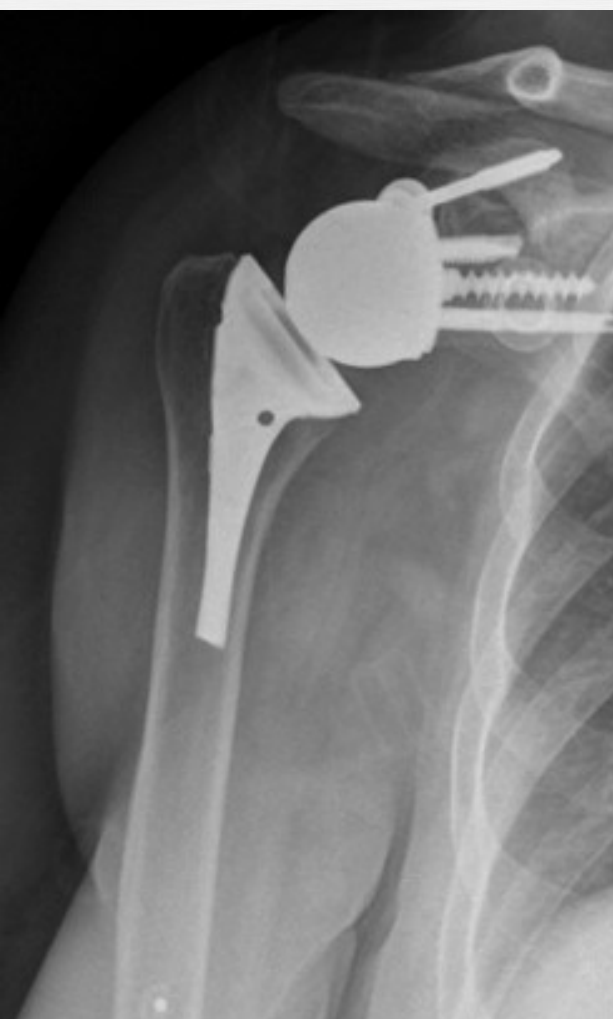
CT



# MRI



# 2 years postop



Thank You



**ROTHMAN**  
ORTHOPAEDIC INSTITUTE



**Sidney Kimmel  
Medical College**  
at Thomas Jefferson University