

Glenoid Lateralization: Baseplate or Glenosphere?

**Joaquin Sanchez-Sotelo MD PhD
Consultant and Professor
Mayo Clinic**

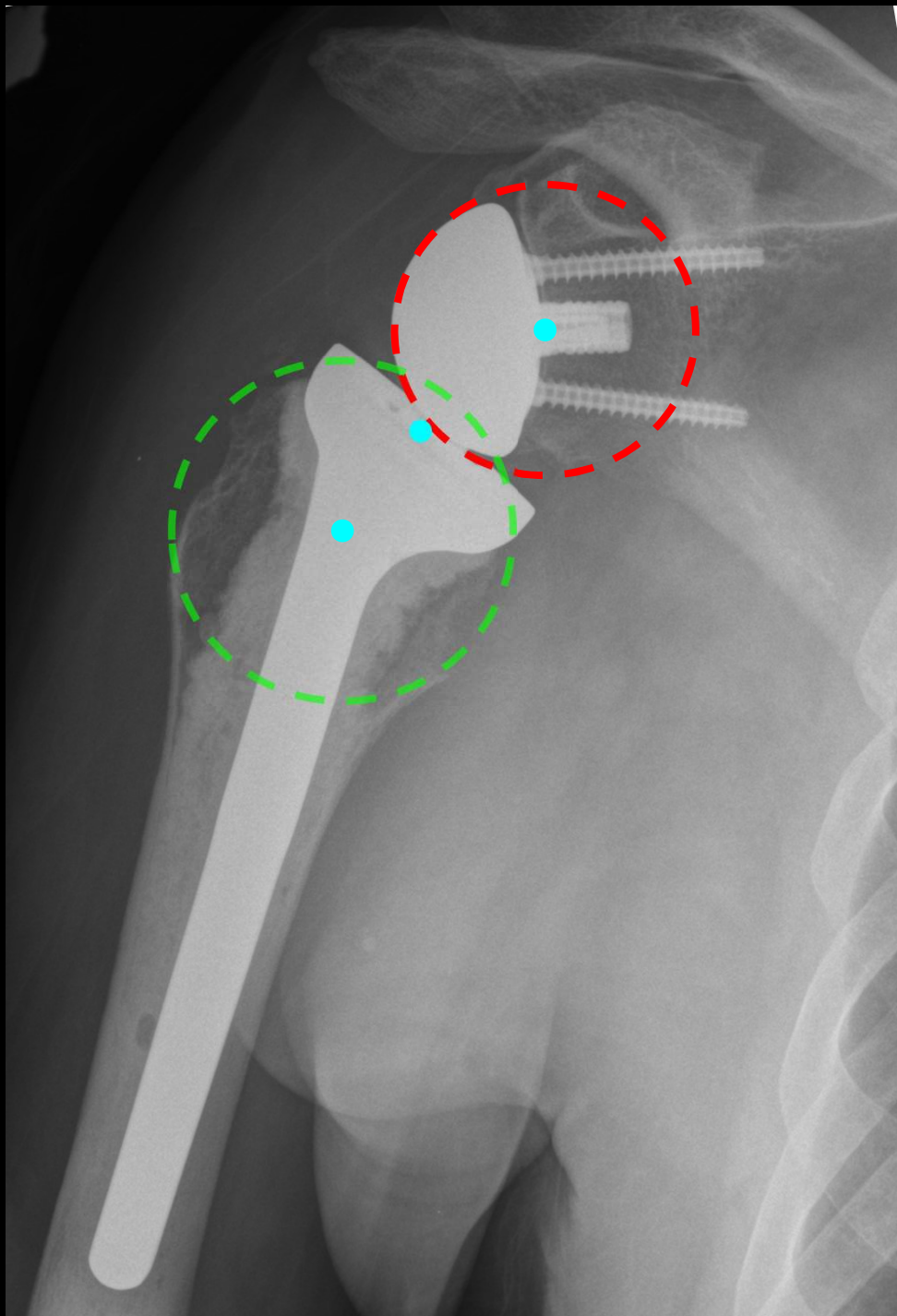
Disclosures

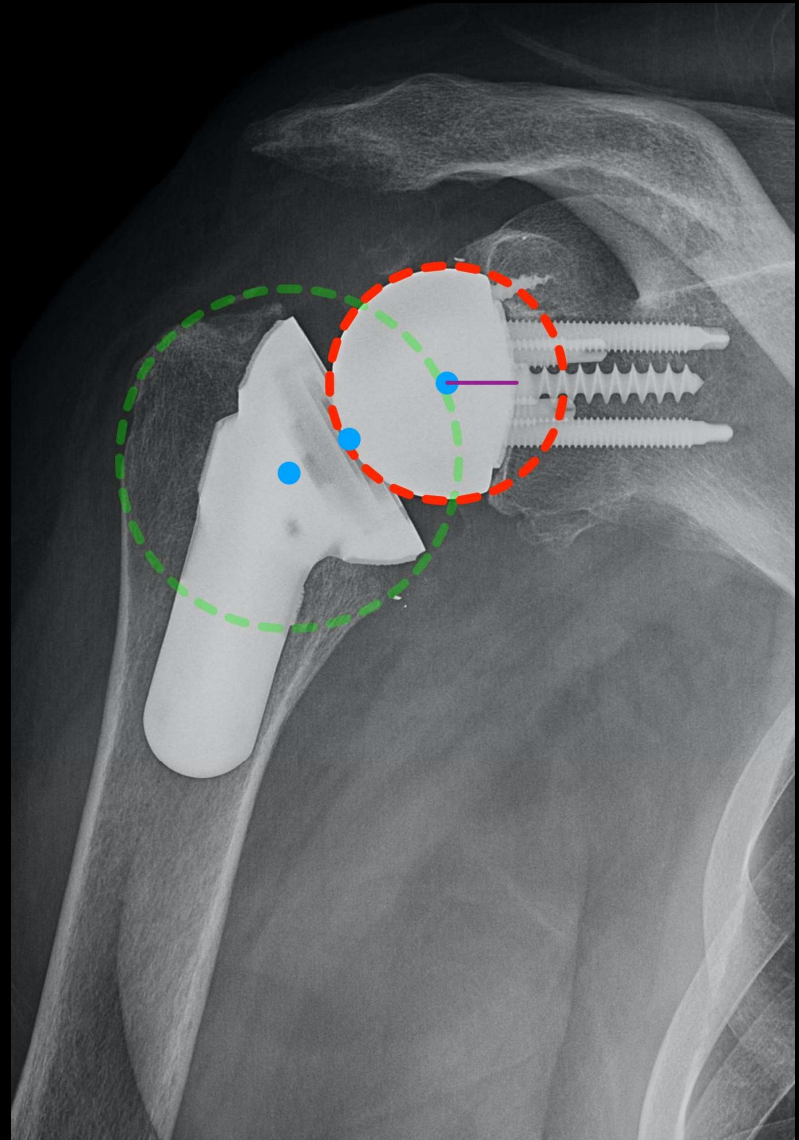
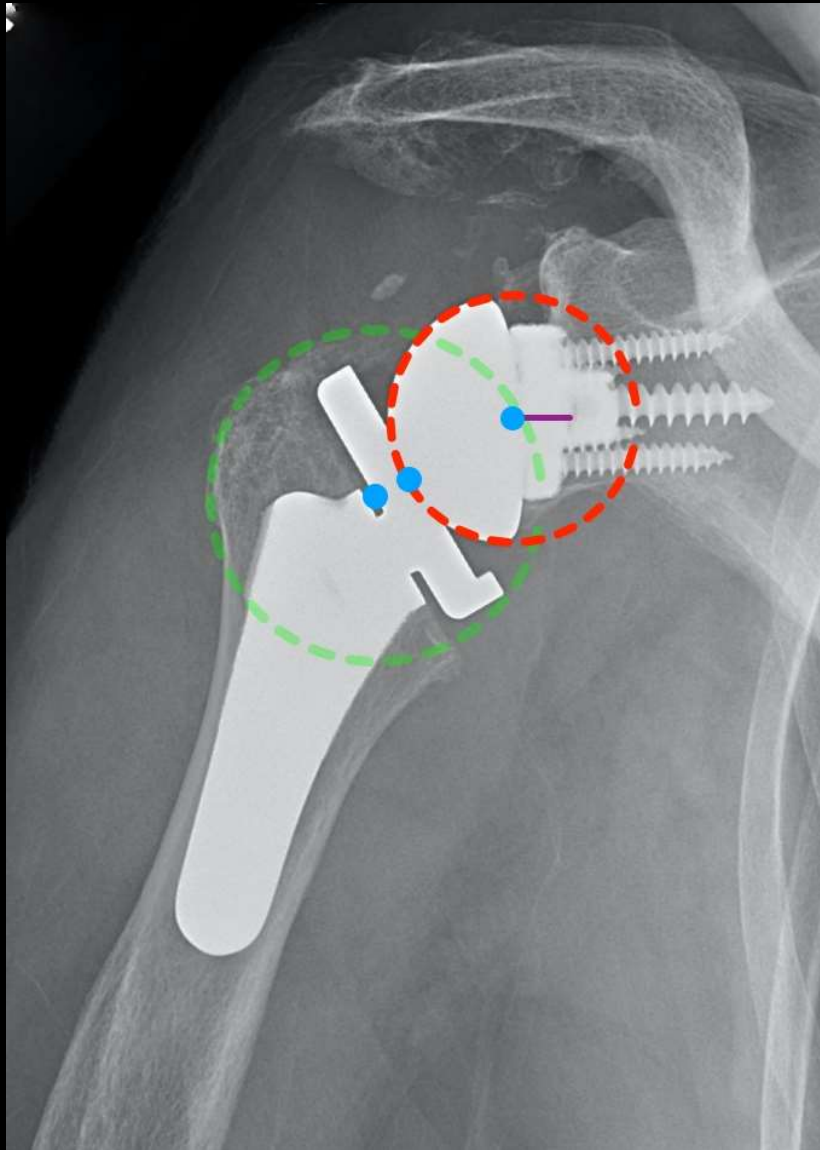
Relevant financial relationships

- Stryker design team
Shoulder implants / products
- Exactech
Fracture fixation
- Wright - consulting
- Acumed – Paid speaker
- Institutional research support
- Board member, ASES
- Associate editor JSES, JOT, JSEA

Off-label usage: none

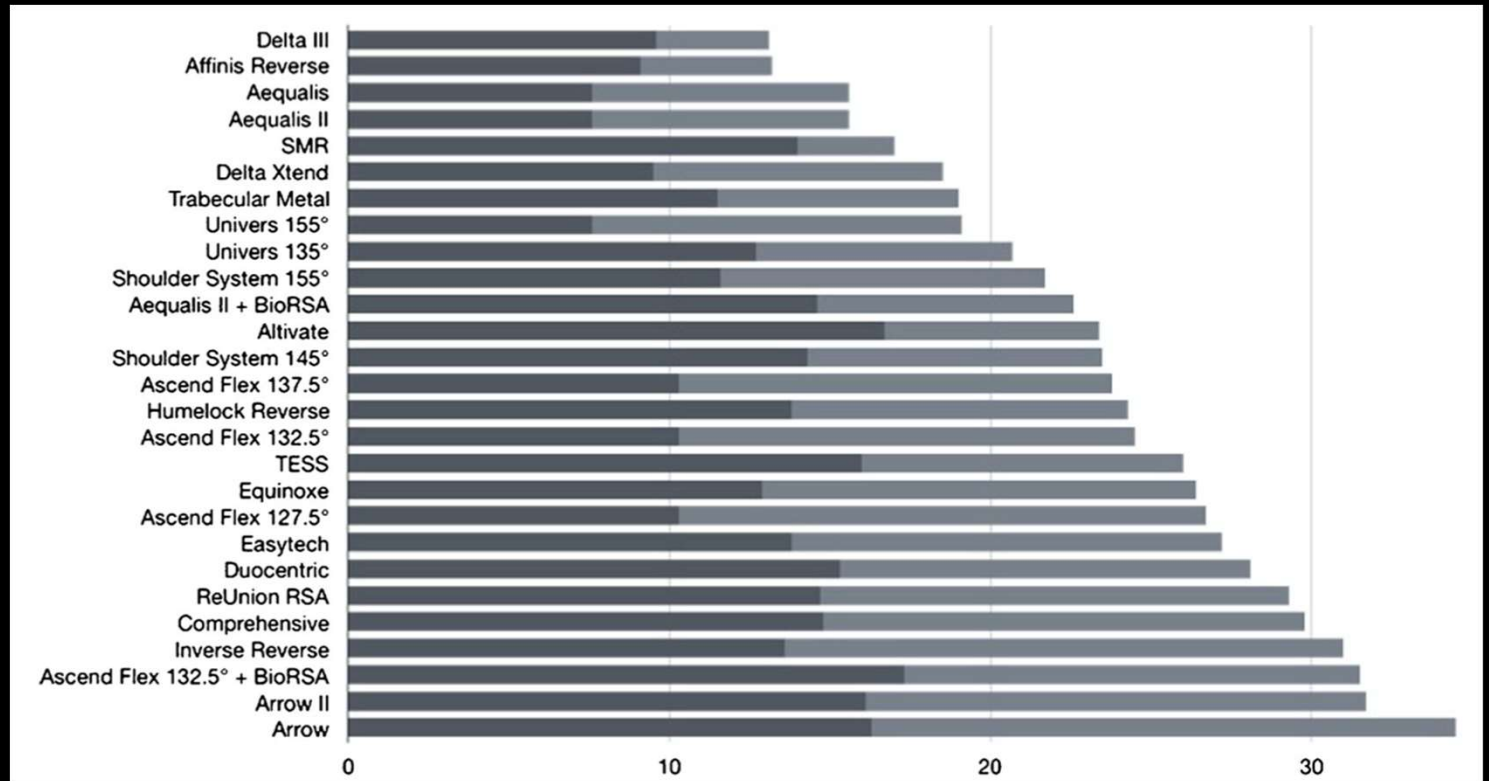
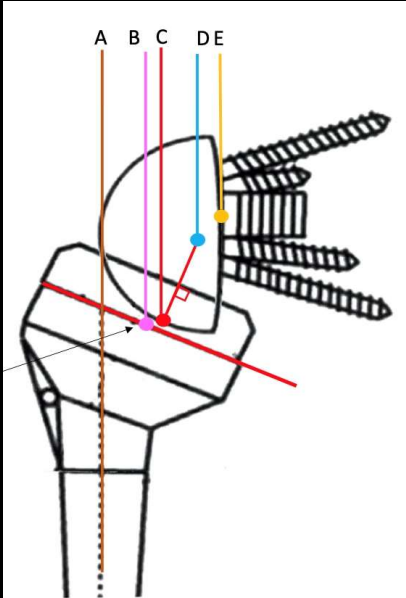






Lateralization in reverse shoulder arthroplasty: a descriptive analysis of different implants in current practice

Jean-David Werthel^{1,2} · Gilles Walch³ · Emilie Vegehan² · Pierric Deransart⁴ · Joaquin Sanchez-Sotelo⁵
Philippe Valenti²





36 or 41 S, +3, +6 A, B, C, D, E

Description	Size
Versa-Dial Glenosphere Standard	36 mm
Versa-Dial Glenosphere +3 mm	36 mm
Versa-Dial Glenosphere +6 mm	36 mm
Versa-Dial Glenosphere Standard	41 mm
Versa-Dial Glenosphere +3 mm	41 mm
Versa-Dial Glenosphere +6 mm	41 mm
Versa-Dial Glenosphere Standard Titanium	36 mm
Versa-Dial Glenosphere +3 mm Titanium	36 mm
Versa-Dial Glenosphere +6 mm Titanium	36 mm
Versa-Dial Glenosphere Standard Titanium	41 mm
Versa-Dial Glenosphere +3 mm Titanium	41 mm
Versa-Dial Glenosphere +6 mm Titanium	41 mm

