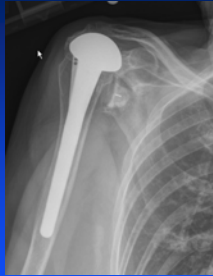


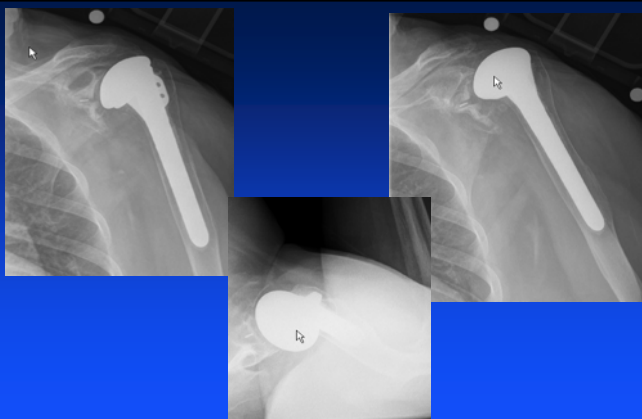
Revision Reverse with Glenoid Bone Loss

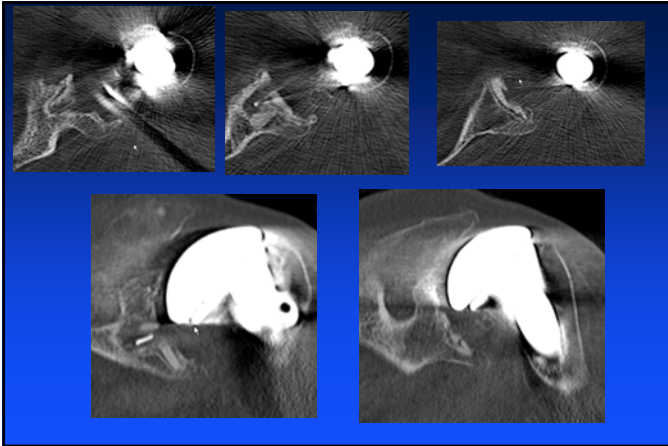
John W. Sperling, MD, MBA
Mayo Clinic

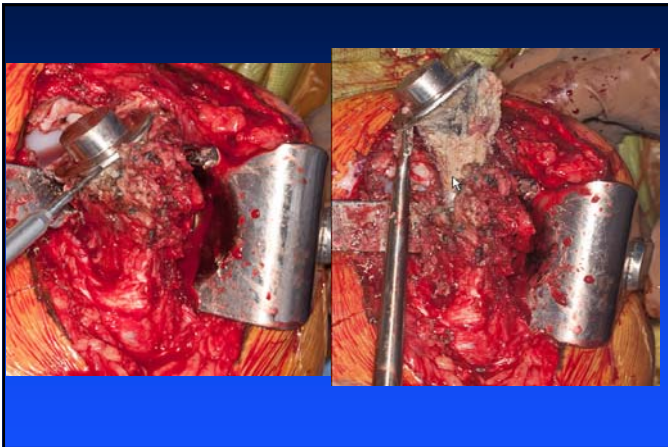


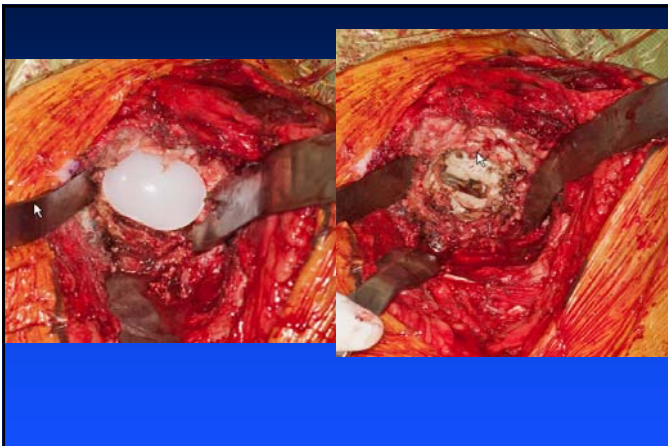
Disclosure

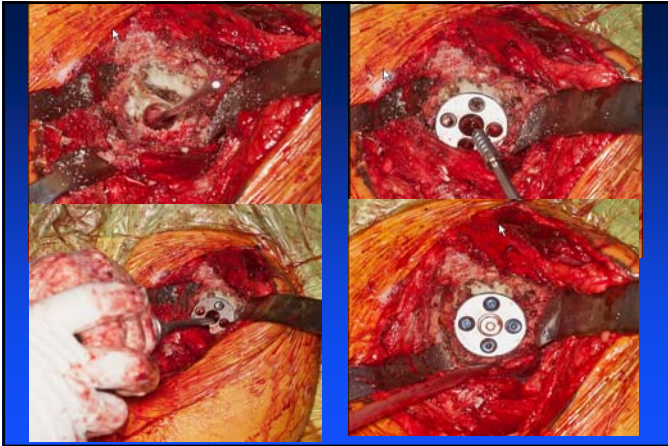
- Biomet: Royalties

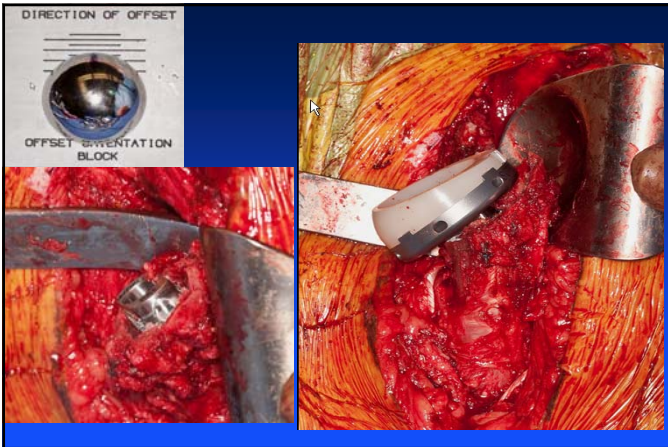


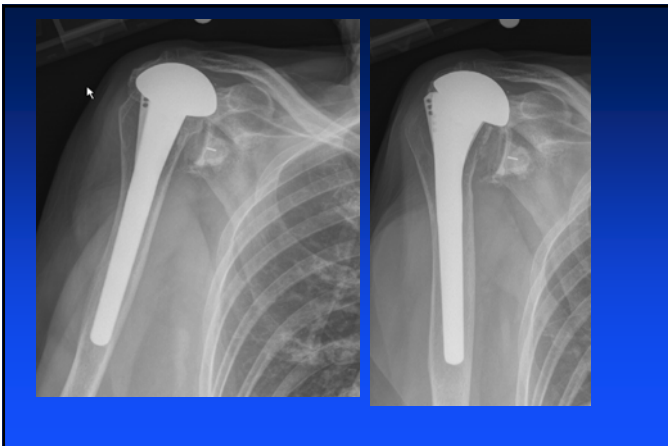


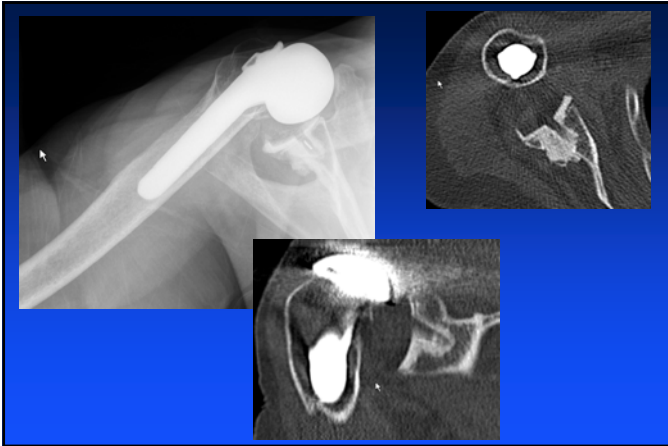


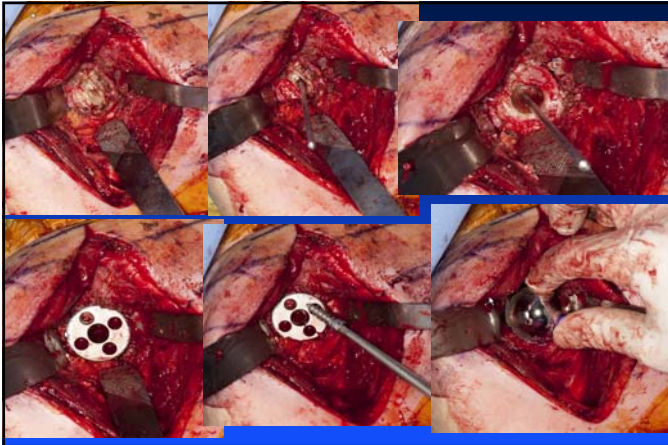






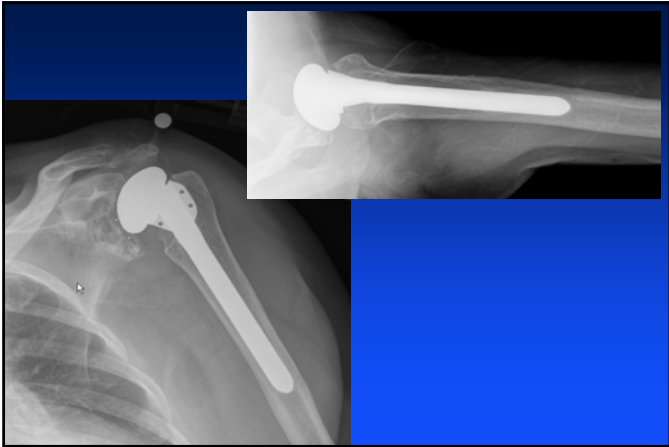


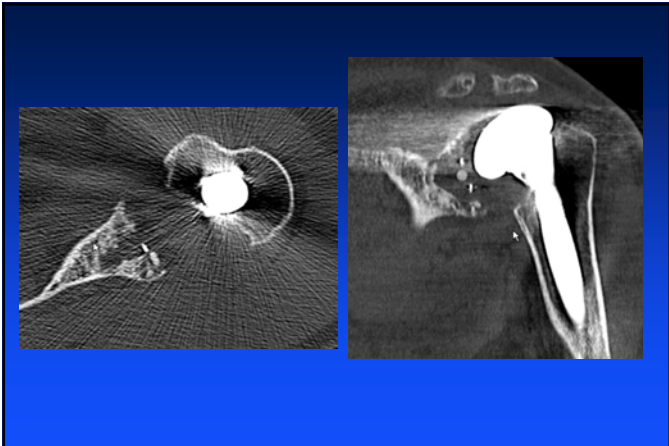




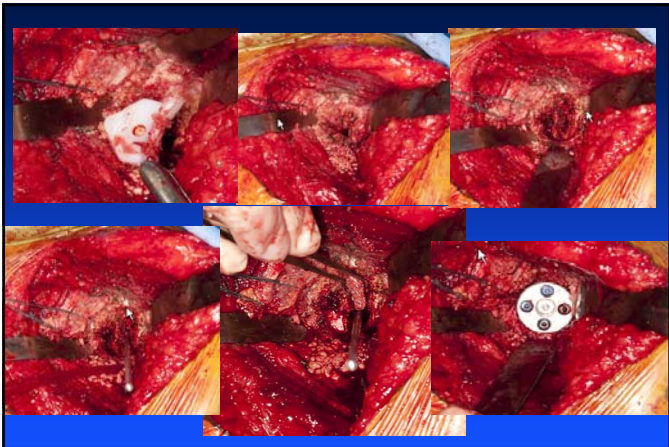


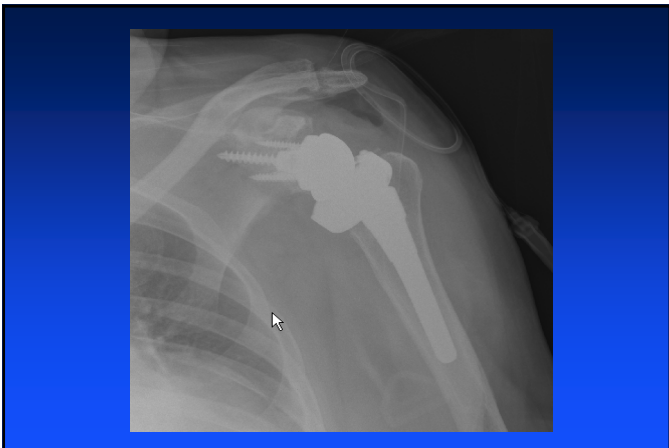


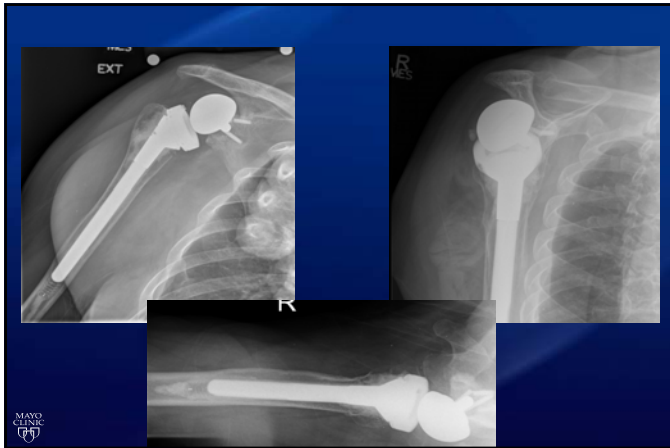
















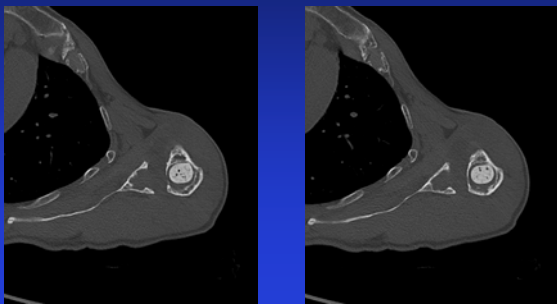
Classic Infected



Spacer Mold

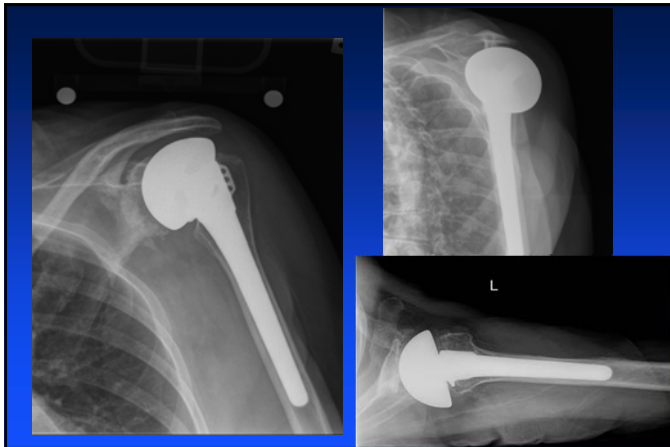


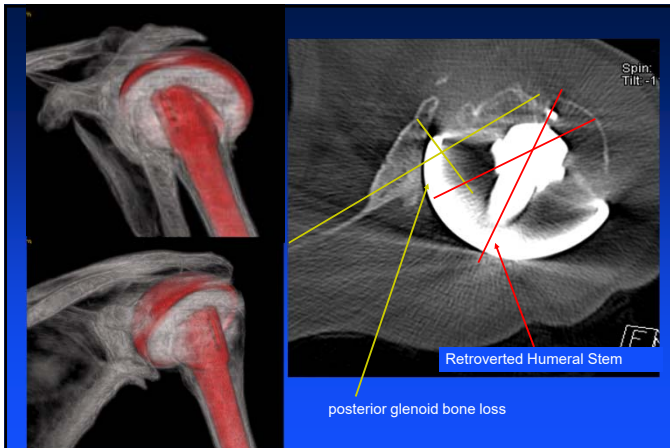
CT Scan-Plan



Post-Op

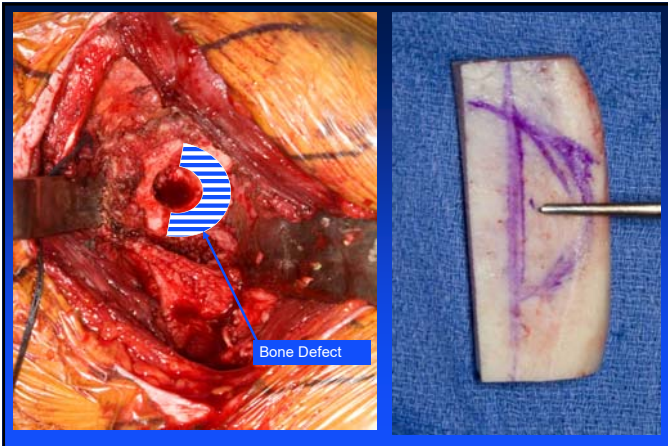


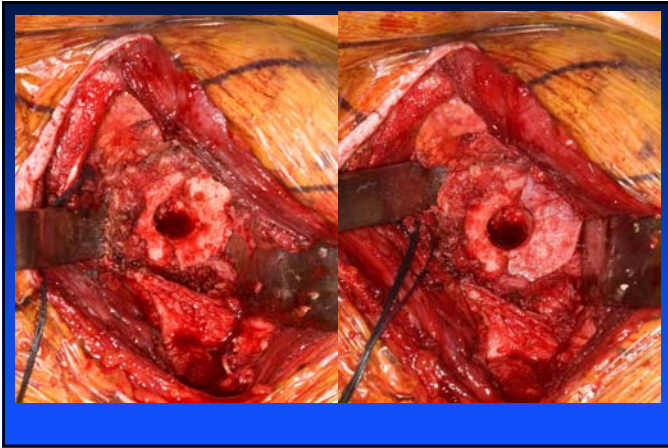


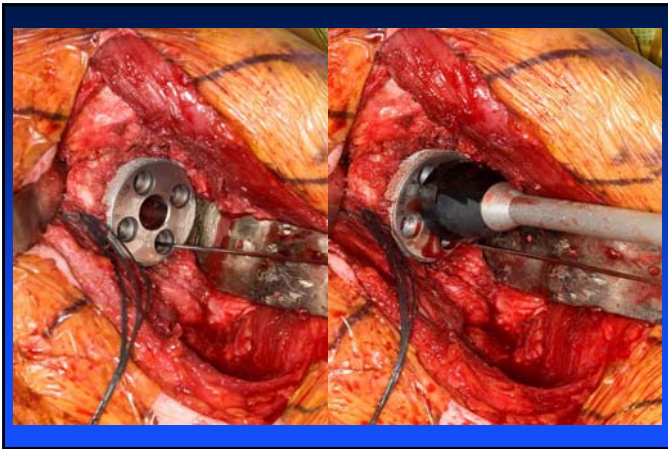


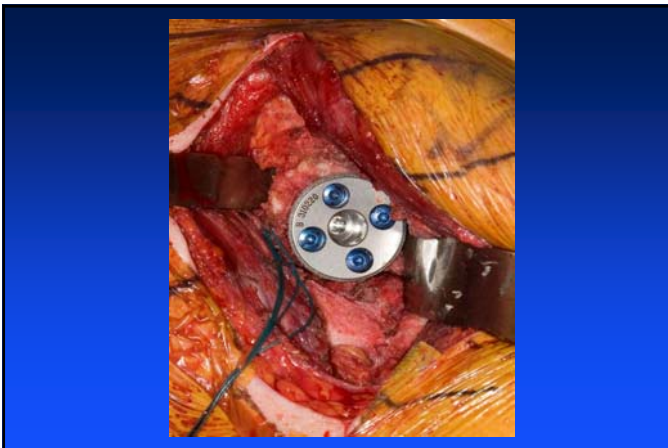


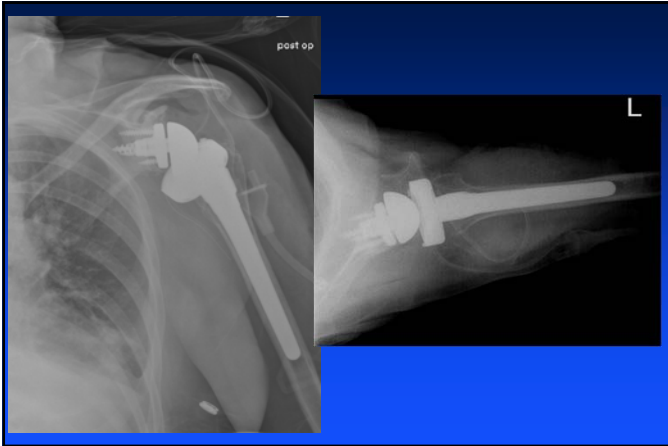













Augmented Baseplate

- Dial the augment to any at any location on the face of the glenoid
- Preserve glenoid bone
- Multiple size options
- Provide compression



Summary

- Know the type of component to be removed
- Be prepared with a variety of implant sizes
- Advanced imaging studies extremely helpful in pre-op planning and component placement
