

Current Solutions in Orthopaedic Trauma

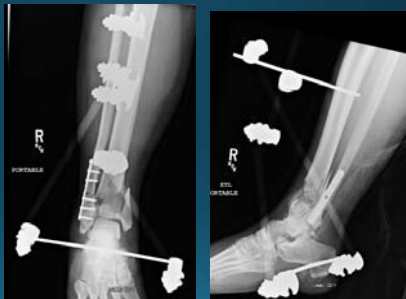
2017

Anjan R. Shah MD

CASE 1

CASE 1

- 22 y/o female MVA
- Initial presentation and management at outside hospital
- Closed, NVI
- *Fibula addressed through an anterior lateral approach???*



22 y/o female MVA
Initial presentation and management
at outside hospital
Closed, NVI

POLL
OPEN


What's wrong with the fixation?

- 1 Nothing 0%
- 2 Fibula short 0%
- 3 Fibula rotated 0%
- 4 Both 2&3 100%



CASE 1

- *So what's the issue?*
- Already compromised soft tissue
- Forced to go through lateral incision for a second time to redo fibula
- Further disruption of fracture hematoma
- Limits additional approach options for tibia







CASE 2

CASE 2

- 46 y/o male fall from height
- Arrived to our institution day of injury

Two X-ray images of an ankle. The left image is a lateral view showing a fracture of the distal tibia. The right image is an anterior view showing the same fracture. Both images include a 5 cm scale bar.

CASE 2

• 46 y/o male fall from height



CASE 2

46 y/o fall from height

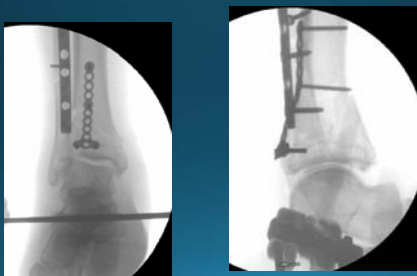
POLL OPEN

Initial surgical management?

- 1 Ex Fix alone 81.48%
- 2 Ex Fix + posterior mall fixation 11.11%
- 3 Ex Fix + anterior fixation 7.41%

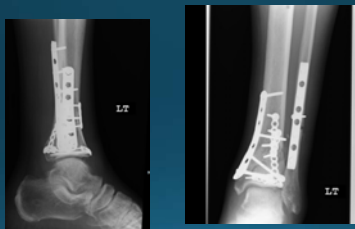


Posterior lateral approach for fibula and post tibia fixation.
Care not to engage anterior segments.



10 days later, return for anterior fixation






CASE 3


CASE 3

- 44 y/o male motorcycle accident
- 1 ppd smoker
- Closed, NVI
- Moderate swelling

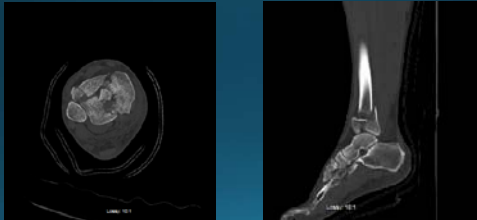


Initial Management?

- 1 Splint + ORIF next AM
0%
- 2 Splint + CT + ORIF next AM
23.08%
- 3 Splint + CT + delayed ORIF
7.69%
- 4 Ex-Fix/CT, delayed ORIF
69.23%




CT done in ER, does this change your plan?



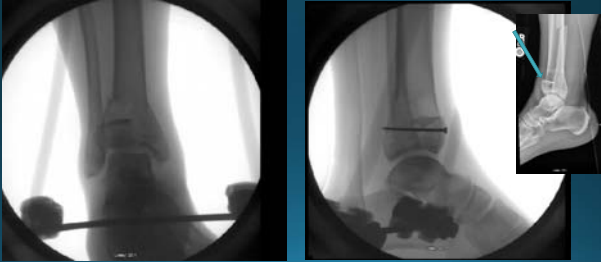
What is your acute management?

POLL OPEN

- 1 ORIF 3.7%
- 2 Ex-Fix 96.3%



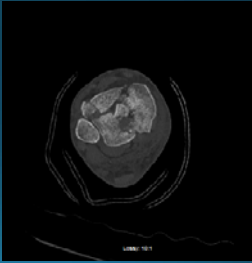
Soft tissue swelling + smoking hx = initial ex fix fibula left alone, hoping to avoid further soft tissue compromise



Time for definitive ORIF, surgical approach?

POLL OPEN

- 1 Single anterior approach 11.11%
- 2 Dual approach 88.89%



CASE 3

• Time for definitive ORIF, surgical approach?

1. Single anterior approach
2. Dual approach



Single anterior approach for tibia

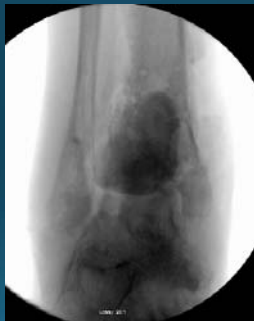


Single anterior approach for tibia Percutaneous fixation of fibula



Single anterior approach for tibia
Percutaneous fixation of fibula





THANK YOU!
