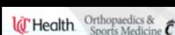


Pearls of Treatment: Tibia, Extensor Mechanism & Compartment Syndrome

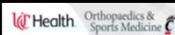
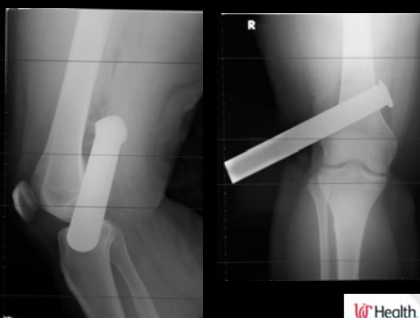
Michael T. Archdeacon, M.D., M.S.E.

Peter J. Stern Professor & Chairman
Department of Orthopaedic Surgery
University of Cincinnati Medical Center

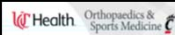
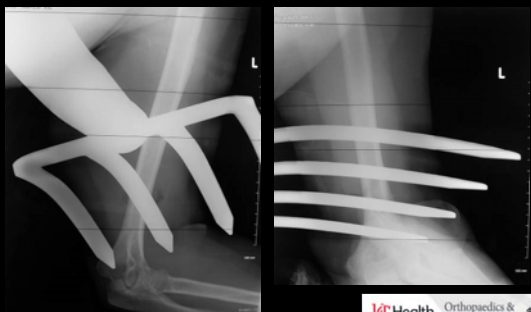
November 28, 2017




Innovative Nailing Technique



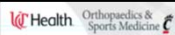
Innovative Nailing Technique II



Semi-Extended Nailing & Supra-Patellar Entry Portal





- Advantages
 - ❖ Proximal & Distal Fx's
 - Eliminate Hyper-Flexion Of Knee For Entry Portal
 - ❖ Simplified Imaging
 - Do Not Need Move Or Hold The Leg For Images

Pictures Compliments of Dr. Sanders 

Reduction Tips & Tricks

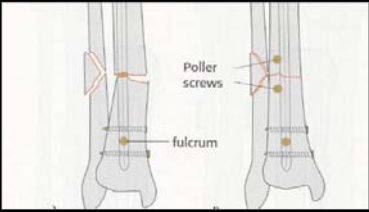
- ❖ Percutaneous Clamps
 - Use Open Fx Wounds
 - Weber / Standard Clamp To Hold Reduction
- ❖ Schantz Pin For "Joystick"
- ❖ Blocking Screws
 - Open Fx If None Of Above Work




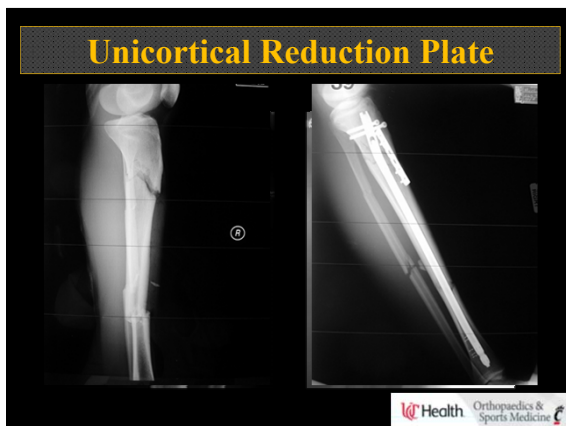


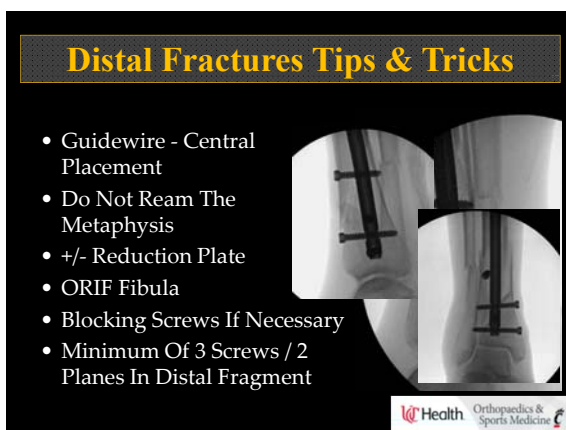
Blocking Screws

- Screws Placed Adjacent To Intramedullary Canal In Order To "Guide" An IM Nail
 - ❖ Prevent Or Correct Recurvatum/Procurvatum And Varus/Valgus
 - ❖ Forces The Nail "Down The Right Path"



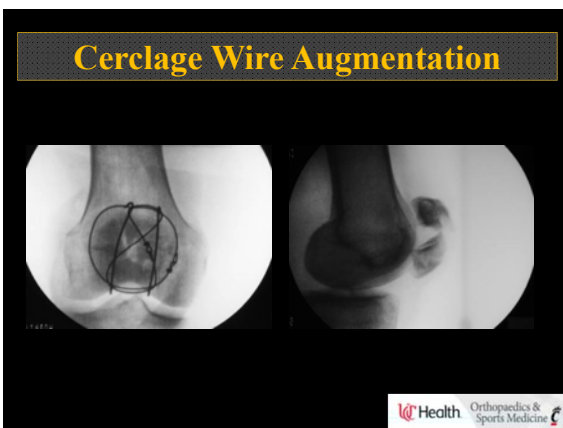


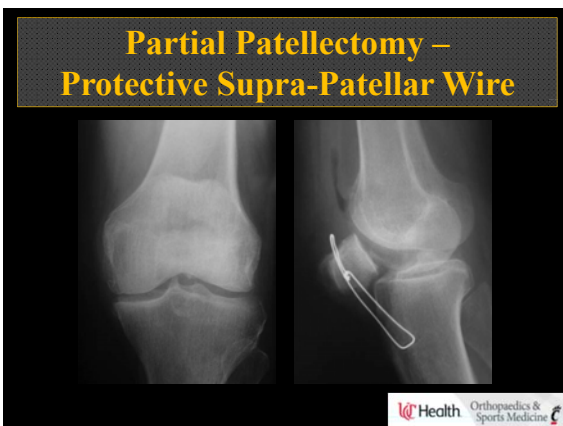






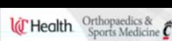








Post-op Rehab

- Knee Brace @ 10°
- Immediate WBAT
 - ❖ In Locked Brace
- Early Range Of Motion
 - ❖ Based On Intraoperative Assessment Of Repair
 - ❖ Active Flexion With Passive Extension
 - 30° Post Op Then Increase 15° Per Week
- Quadriceps Strengthening
 - ❖ Initiate Quad Sets & Terminal Extensions Immediately Post Op




Closure With Multiple Relaxing Incisions



1 Year Post Op



Patient Education



- Non-Compliance Can Result In Loss of Fixation / Failure
 - ❖ Must Educate Patient Toward WB
 - ❖ Risks Of Noncompliance
 - ❖ Supervised PT Program May Assist With Compliance / Education

