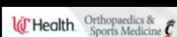


## Compartment Syndrome (And Other Really Bad Soft Tissue Problems)

Michael T. Archdeacon, M.D., M.S.E.

Peter J. Stern Professor & Chairman  
Department of Orthopaedic Surgery  
University of Cincinnati Medical Center

November 28, 2017



---

---

---

---

---

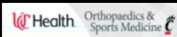
---

---

---



50 yo Male  
> Ped vs Vehicle  
> Isolated Injury  
> Closed Fracture,  
But Extensive  
Swelling  
> Minimal Pain  
With Passive  
Stretch



---

---

---

---

---

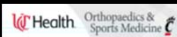
---

---

---



> Taken To OR  
For Ex Fix &  
Provisional  
Reduction  
> Leg "Feels  
Pretty Tight"



---

---

---

---


---

---

---

---

### Next steps?



1. ICU For Monitoring  
0%
2. Immediate Fasciotomies  
56.52%
3. Compartment Pressure Measurements  
43.48%
4. Amputation  
0%

UC Health Orthopaedics & Sports Medicine

---

---

---

---

---

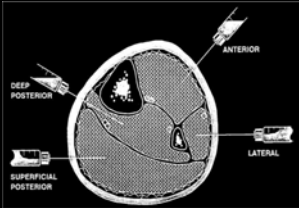
---

---

---

### Diagnosis

A Clinical Diagnosis  
❖ Your Patient Will Tell You They Have It



- Measuring Pressures
  - ❖ Obtunded Patients
  - ❖ Confirms Clinical Suspicion
- $\Delta P$ 
  - ❖ Tissue Compartment Pressure Within 30 mm Hg Of Diastolic Blood Pressure

UC Health Orthopaedics & Sports Medicine

---

---

---

---


---

---

---

---

### Treatment?



1. Single Incision Fasciotomies  
12.5%
2. Dual Incision Fasciotomies  
87.5%
3. Percutaneous Fasciotomies  
0%
4. Amputation  
0%

UC Health Orthopaedics & Sports Medicine

---

---

---

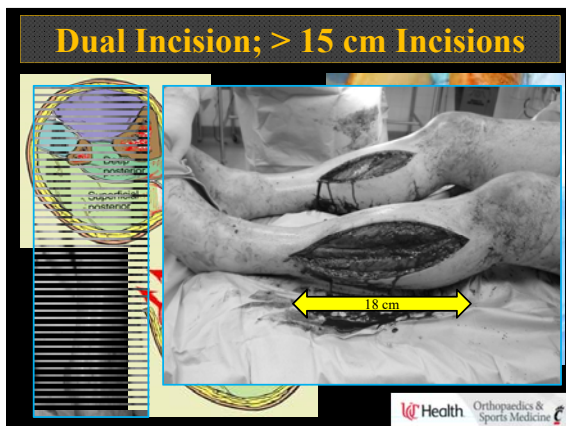
---

---

---

---

---



---

---

---

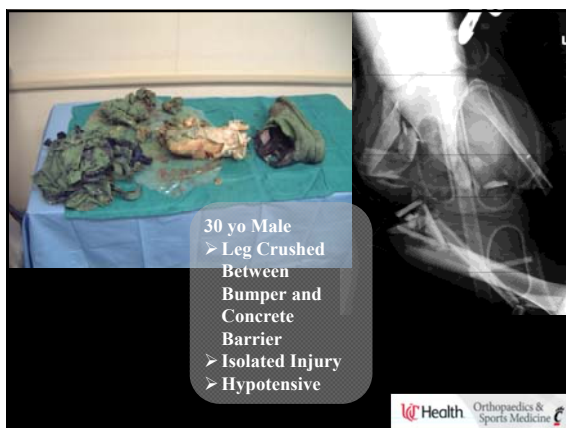
---

---

---

---

---



---

---

---

---

---

---

---

---



---

---

---

---

---

---

---

---



---

---

---

---

---

---

---

---



---

---

---

---

---

---

---

---