


**PERI-PROSTHETIC FEMORAL FRACTURES**  
**ORIF OR REVISION CASES**  
GEORGE HAIDUKEWYCH, M.D.



---

---

---

---

---

---

---

---

**DISCLOSURES**

- REVISION TECHNOLOGIES -STOCK
- ROYALTIES DEPUY, BIOMET

---

---

---

---


---

---

---

---

**POLL OPEN**



74 MALE S/P FALL HTN. THA DONE TWO YEARS AGO. NO PAIN PRIOR TO FALL. STEM WELL FIXED

1. ORIF  0%
2. REVISION WITH CEMENTED STEM  0%
3. REVISION WITH UNCEMENTED STEM  0%

---

---

---

---

---


---

---

---

POLL OPEN

### FIXATION DECISIONS:



1. LATERALLY BASED LOCKING PLATE  
0%
2. USE OF SUPPLEMENTAL ALLOGRAFT STRUTS?  
0%
3. SCREWS AND CABLES OR SCREWS ALONE?  
0%
4. HOW PROXIMAL TO TAKE THE PLATE?  
0%
5. HOW DISTAL TO TAKE THE PLATE?  
0%

---

---

---

---

---


---

---

---

POLL OPEN

### FIXATION DECISIONS: YOUR STRATEGY:



1. FIX WITH CABLES ONLY PROXIMALLY AND SCREWS DISTALLY  
0%
2. COMBINE SCREWS AND CABLES PROXIMALLY AND SCREWS DISTALLY  
0%
3. USE SCREWS ONLY  
0%

---

---

---

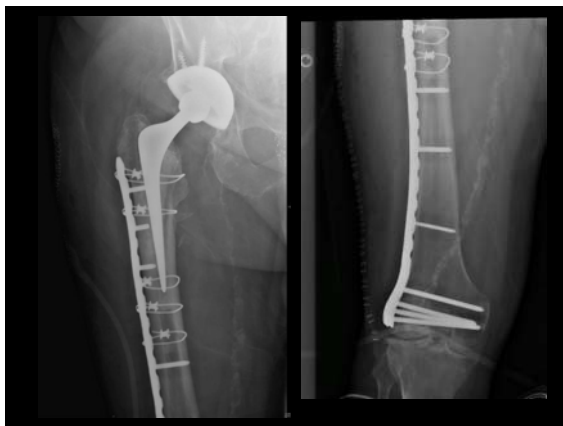
---

---

---

---

---



---

---

---

---

---

---

---

---



---

---

---

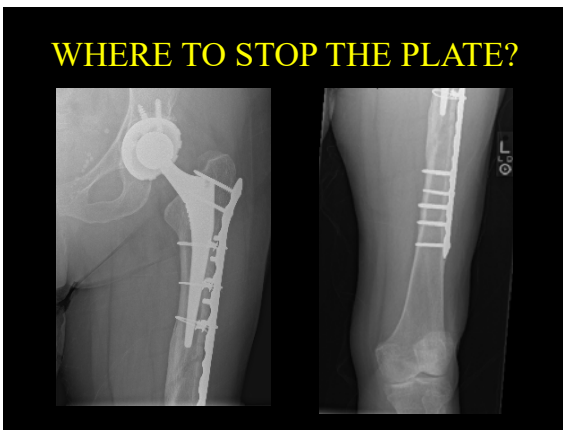
---

---

---

---

---



---

---

---

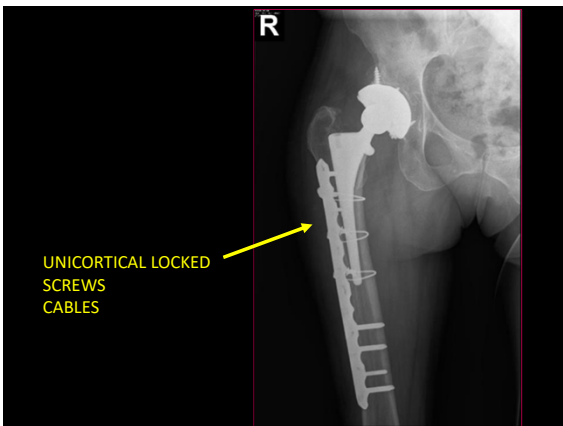
---

---

---

---

---



---

---

---

---

---


---

---

---

### WHAT WENT WRONG HERE?

POLL OPEN



1. PROXIMAL FIXATION TOO SHORT 0%
2. DISTAL FIXATION TOO LONG 0%
3. BIOLOGIC INSULT AT FRACTURE SITE 0%
4. ALL OF THE ABOVE 0%

---

---

---

---

---

---

---

---

### WHAT TO DO NOW?

POLL OPEN

1. REPEAT PLATING WITH LONGER LOCKING PLATE 0%
2. REPEAT ORIF WITH ALLOGRAFT STRUTS 0%
3. REVISE TO LONG CEMENTED STEM 0%
4. REVISE TO LONG UNCEMENTED STEM 0%

---

---

---

---

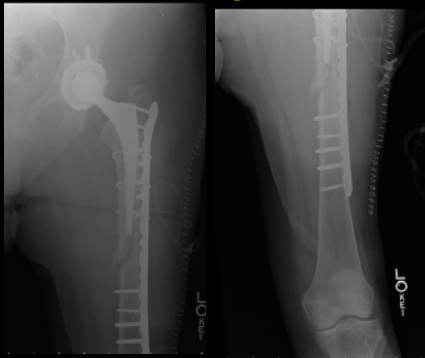
---

---

---

---

### Revised to a longer construct



---

---

---

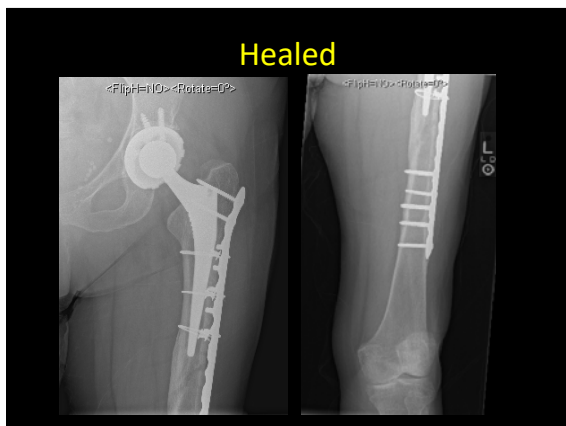
---

---

---

---

---



---

---

---

---

---

---

---

---

**CASE 3**

**72 F HEALTHY, FELL.  
THA DONE IN 2001  
STEM IS LOOSE**

POLL OPEN

1. ORIF WITH PLATE ALONE 0%

2. ORIF WITH PLATE AND ANTERIOR ALLOGRAFT STRUT 0%

3. REVISION OF STEM ONLY 0%

4. REVISION OF STEM AND POLYETHYLENE EXCHANGE 0%

---

---

---

---

---

---

---

---

**COMPONENT SELECTION:**

POLL OPEN

1. LONG STEM CEMENTED 0%

2. CYLINDRICAL FULLY COATED UNCEMENTED 0%

3. MODULAR TAPERED TITANIUM UNCEMENTED 0%

---

---

---

---

---

---

---

---

# “INTERNAL SCAFFOLD TECHNIQUE”

---

---

---

---

---

---

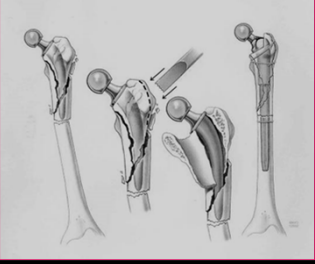
---

---

## MANAGEMENT OF PERIPROSTHETIC FXS Loose Stem/Inadequate Proximal Bone

Newer Method:

- Access only through fracture lines, osteotomy
- Use prosthesis as internal scaffold, pull sleeve of bone and soft tissue around it



---

---

---

---

---

---

---

---



---

---

---

---

---


---

---

---

**MODULAR TAPERED STEMS**  
How Do They Work?

- Grit blasted titanium promotes bone ongrowth for long term fixation



---

---

---

---

---

---

---

**SURGICAL TECHNIQUE TIPS  
AND PEARLS**

---

---

---

---

---

---

---



---

---

---

---

---

---

---

## TIPS AND TRICKS

- TRANSFEMORAL APPROACH
- PLACE PROPHYLACTIC CABLE AT MOUTH OF DISTAL FRAGMENT



---

---

---

---

---

---

---

---



---

---

---

---

---

---

---

---



USE FLUOROSCOPY TO CONTROL REAMING TRAJECTORY IN **BOTH PLANES** – REDUCES RISK OF ANTERIOR PERFORATION

---

---

---

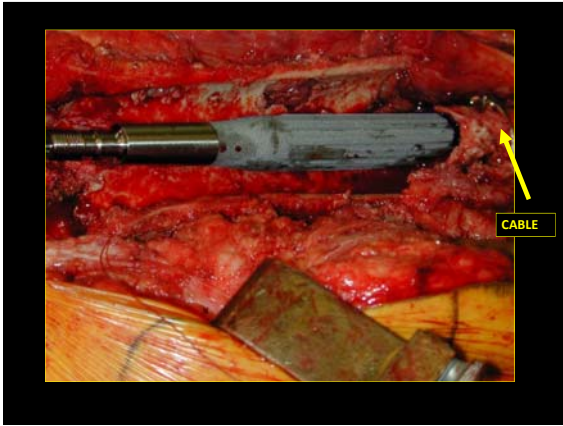
---

---

---

---

---



---

---

---

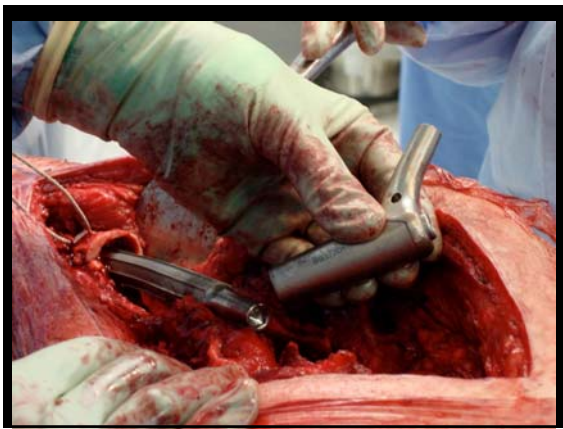
---

---

---

---

---



---

---

---

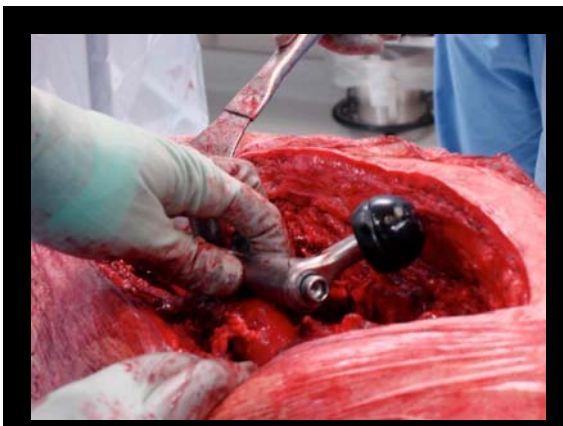
---

---

---

---

---



---

---

---

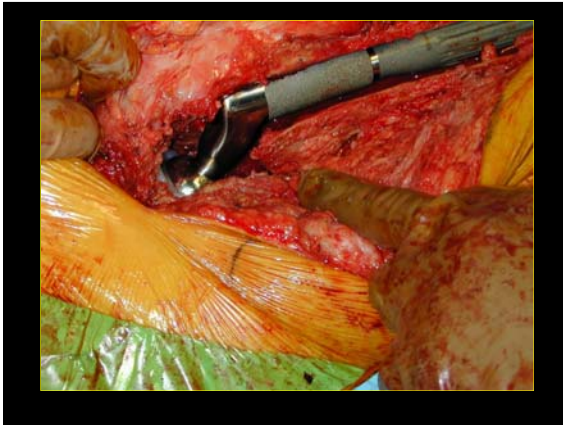
---

---

---

---

---



---

---

---

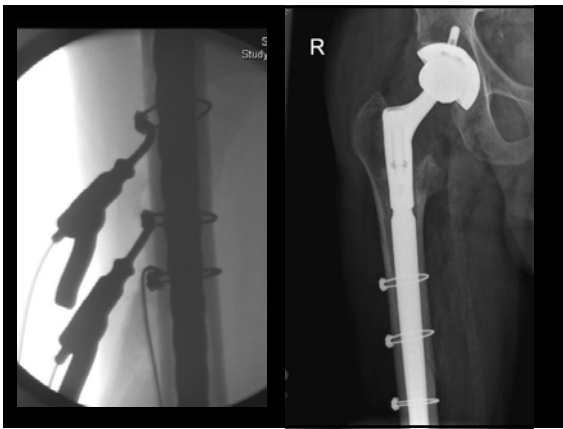
---

---

---

---

---



---

---

---

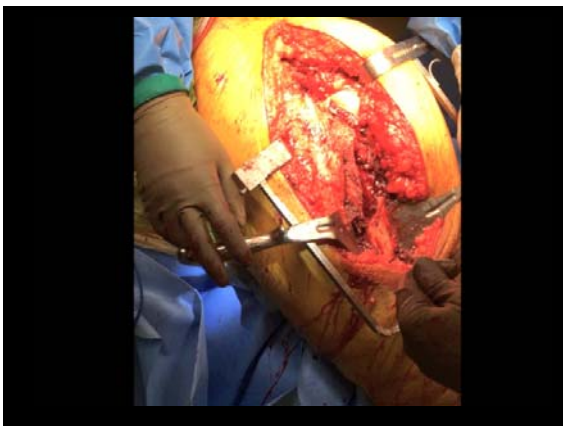
---

---

---

---

---



---

---

---

---

---

---

---

---



---

---

---

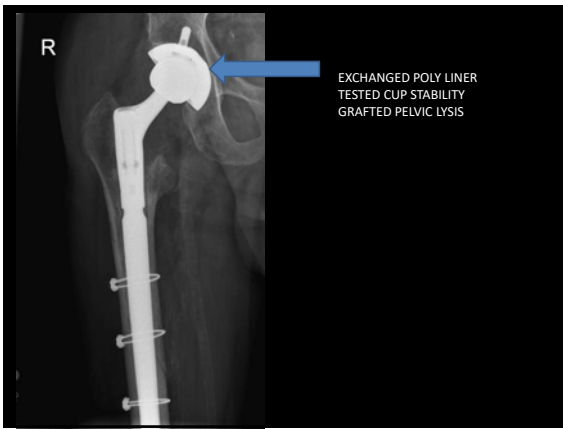
---

---

---

---

---



---

---

---

---

---

---

---

---



---

---

---

---

---

---

---

---



---

---

---

---

---

---

---



---

---

---

---

---

---

---



---

---

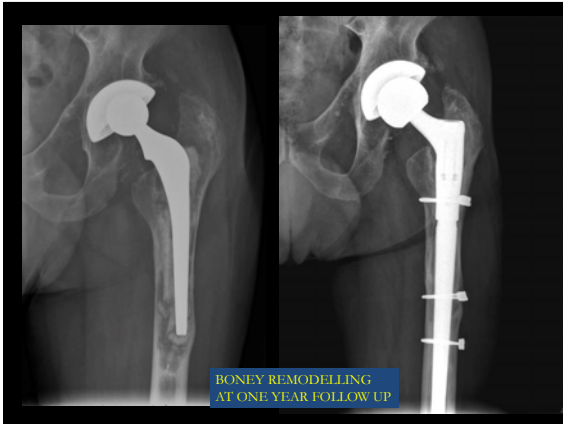
---

---

---

---

---



---

---

---

---

---

---

---

---



---

---

---

---

---

---

---

---