



---

---

---

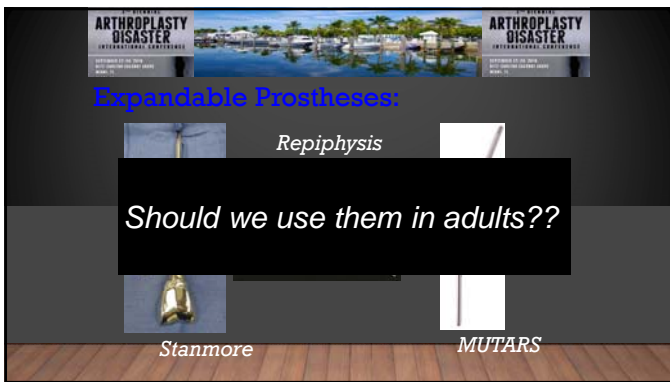
---

---

---

---

---



---

---

---

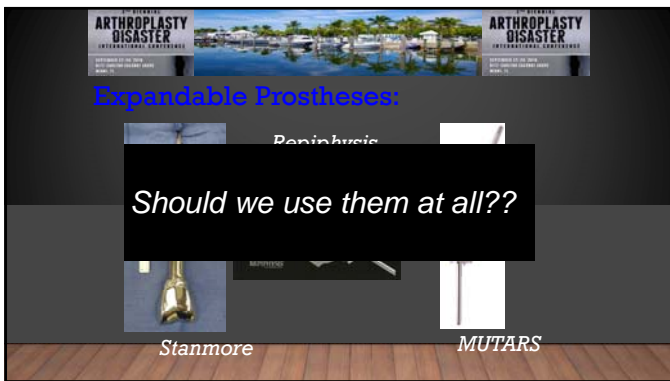
---

---

---

---

---



---

---

---

---

---

---

---

---



ARTHROPLASTY DISASTER

Issues:

Indications ? LL≠

- 2cm - 6cm
- Hip (Pelvis, Femur)
- Knee (Femur, Tibia)
- Tibia??
- **FEMUR**

---

---

---

---

---

---

---

---

ARTHROPLASTY DISASTER

Expandable Protheses:

~~Repiphysi  
s~~

Stanmore

MUTARS

---

---

---

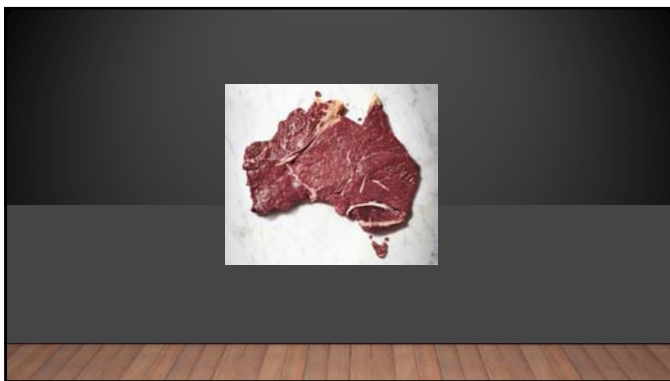
---

---

---

---

---



---

---

---

---

---

---

---

---



---

---

---

---

---

---

---

---



---

---

---

---

---

---

---

---



---

---

---

---

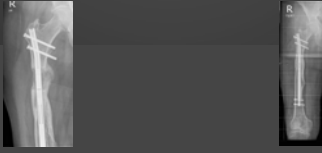
---

---

---

---

CASE 1 STEP 3



---

---

---

---

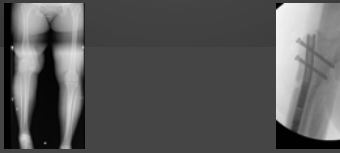
---

---

---

---

CASE 2 THE BEGINNING



---

---

---

---

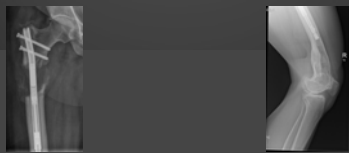
---

---

---

---

CASE 2



---

---

---

---

---

---

---

---



---

---

---

---

---

---

---

---



---

---

---

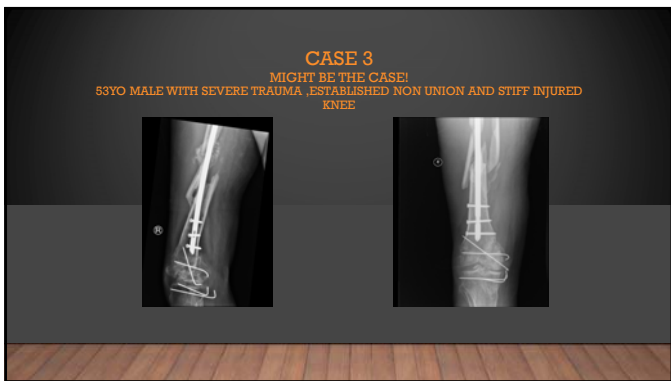
---

---

---

---

---



---

---

---

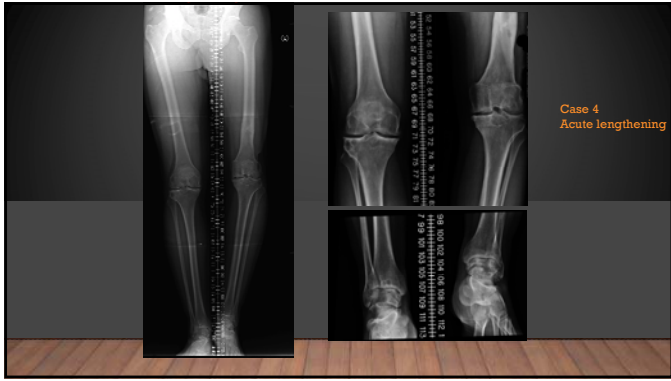
---

---

---

---

---



---

---

---

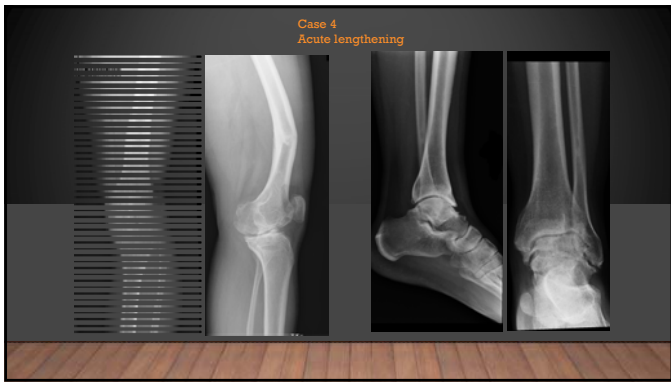
---

---

---

---

---



---

---

---

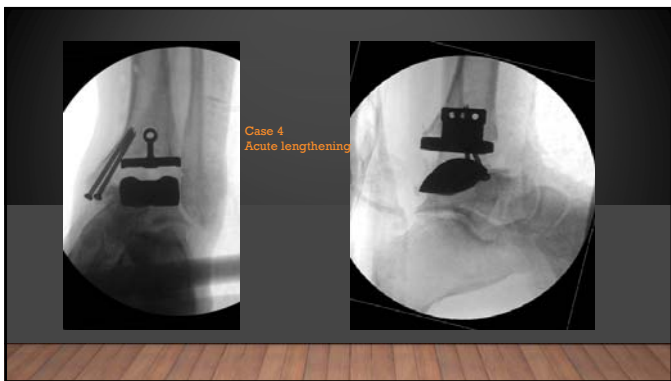
---

---

---

---

---



---

---

---

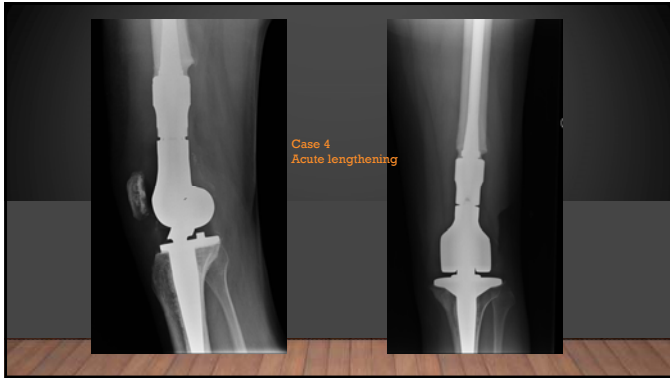
---

---

---

---

---



---

---

---

---

---

---

---

---

### ADULT GROWERS WEIGHT BEARING DURING LENGTHENING

- **Maximum loading capacity of the prosthesis**

Since the prosthesis is designed for children, and great importance is attached to achieving a slim design, the weight carrying capacity is naturally limited. Both the drive unit and the prosthesis itself were able to even endure biomechanical tests according to ISO 7208-4, which specifies a test method for determining the endurance of total hip joint prosthesis. For safety reasons, a full stress of the prosthesis is only admissible up to a body weight of 40kg. –

- Would need to be addressed by manufacturer

---

---

---

---

---

---

---

---

### DIFFERENT ISSUES

- Adult vs. Pediatric different factors?
- Tissue Elasticity
- Co-morbidities
- Adaptability (eg. amputations)
- Chronicity of the problem
- Stiffness/Nerve
- Age
- Psychological factors in adult trauma practice – ie preserve the bone
- Advent of resurfacing navigation

---

---

---

---

---

---

---

---